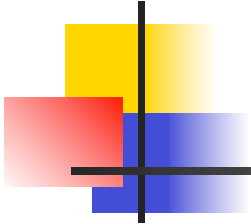


PROPOSED TRAFFIC CALMING MEASURES ON WESTBROOK AVE.

(FROM HERMITAGE RD TO BROOK RD)

**Travis Bridewell
City of Richmond
Department of Public Works**



Traffic calming definition

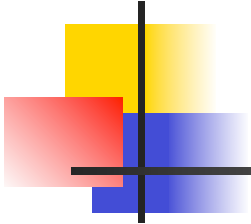
Traffic calming is the practice of using physical devices to influence traffic movements on neighborhood streets.

The main objective of traffic calming is to improve safety through speed reduction measures such as traffic circles, splitters and chokers.



Traffic calming physical devices – How do they work?

- Influences driver behavior - creates a driver perception for slowing down
- Reduces “cut through” traffic
- Improves conditions for pedestrians by shortening the travel distance to cross the street



Recommendations for Westbrook Avenue

(Taken from the June 11, 2009 Bellevue neighborhood meeting)

Pavement markings

- White edge line south side only
- “Sharks teeth” pavement markings on the I-95 off ramp to Westbrook Avenue

Residential circle (modified)

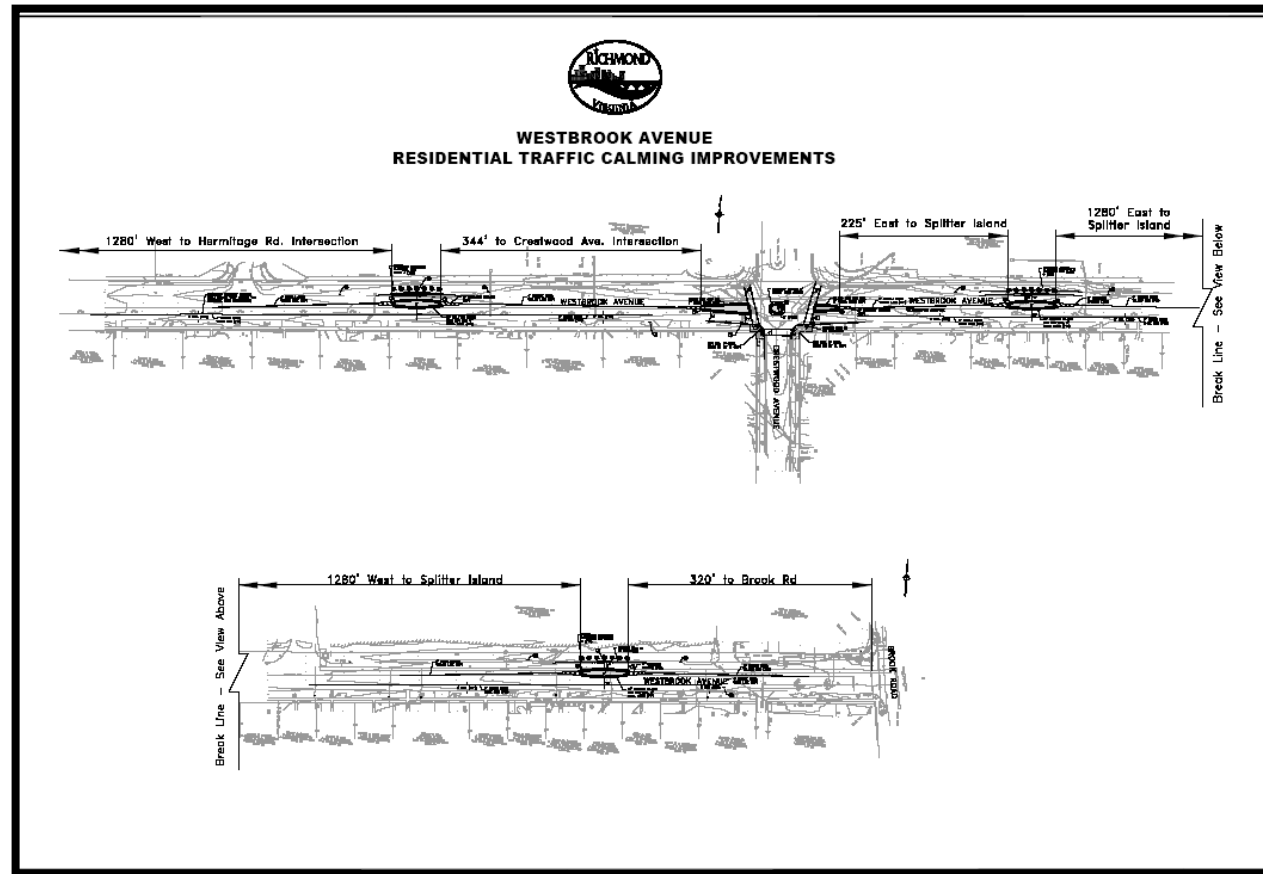
- At the Westminster Canterbury main entrance

Splitters

- Between Westminster Canterbury exit only and the main entrance
- Between Souder Ct. and Givens Ct.
- Between Azalea Mall entrance and Brook Road

PROPOSED TRAFFIC CALMING MEASURES ON WESTBROOK AVE.

(FROM HERMITAGE RD TO BROOK RD)





Project details

- **Initiated by: The Bellevue Neighborhood Traffic Committee**
- **Complaint: Speeding**
- **Average Daily Traffic (Year 2008) = 6,119**
- **Posted speed = 35 mph / 85percentile speed = 39mph**
- **Crash data = Five crashes in a three year period**
- **Reason for implementation: To reduce speeding in the area.**
- **Community acceptance: Support**
- **Cost to implement = \$110,000**
- **Final design approved by the Urban Design Committee on March 4, 2010 and the City Planning Commission on March 16, 2010.**



Project status

<u>Item</u>	<u>Anticipated date</u>
■ Plans completed	May 1, 2010
■ Contract award	June 1, 2010
■ Begin construction	July 1, 2010
■ Construction complete	October 1, 2010

Splitter concept

In-Town Splitter Island

Location

- Long, straight road sections.
- Near entrances to towns.

Signage

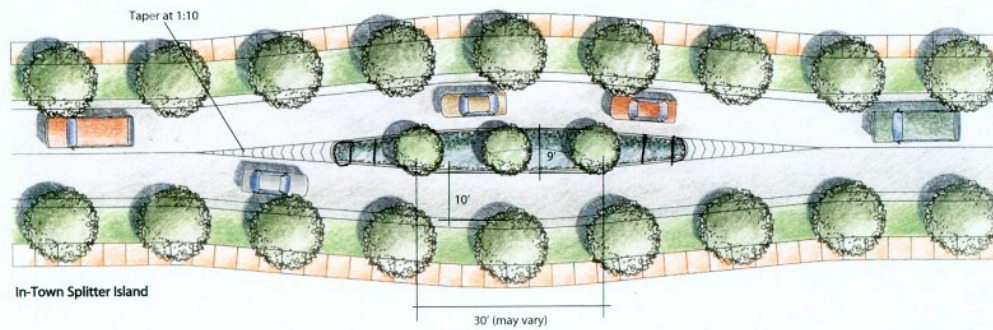
- Locate warning signs for splitter island on Route 50 as recommended in MUTCD.
- Locate warning sign on either end of splitter island.

Landscaping Elements

- Use to highlight the location of the splitter island.
- Will be compatible with existing landscaping and proposed streetscaping.

Geometric Design Elements

- Design speed 25 mph.
- 9' wide raised median.
- Non-mountable curb on median.
- 10' wide travel lanes.
- Taper 1:10.



Residential traffic circle – an example of the final product

